



FABRICS AND LEATHERS

Quadrifoglio Group

OFFICE FURNITURE

B01



Fabric

100% polyester FR - Trevira CS

Martindale: 100.000 cycles \pm 20%

Reaction to fire: EN 1021 Part 1-2 (EU)

M1 (FR), BS 5852 CRIB 5 (GB), Classe 1 (IT),

B1 DIN 4102 (D), TB 117:2013 (USA)

Tessuto

100% poliestere FR - Trevira CS

Martindale: 100.000 cicli \pm 20%

Reazione al fuoco: EN 1021 Parte 1-2 (EU)

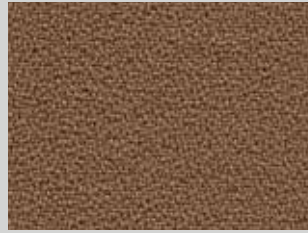
M1 (FR), BS 5852 CRIB 5 (GB), Classe 1 (IT),

B1 DIN 4102 (D), TB 117:2013 (USA)

OEKO-TEX®
STANDARD 100



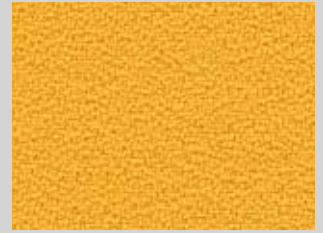
B01/009



B01/016



B01/027



B01/010



B01/017



B01/018



B01/021



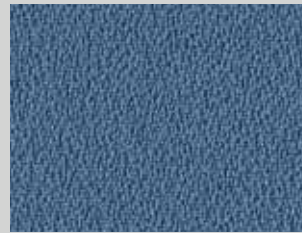
B01/024



B01/011



B01/013



B01/020



B01/023



B01/014



B01/019



B01/025



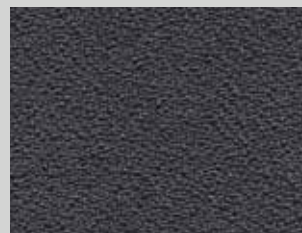
B01/026



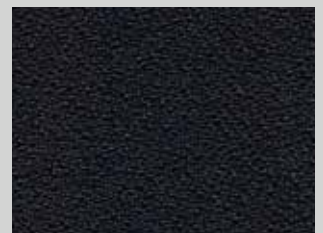
B01/012



B01/015



B01/222



B01/028
BLACK/NERO

C01

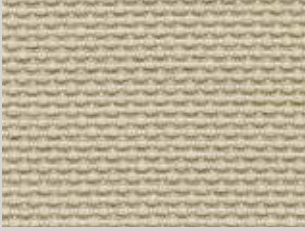


Fabric

100% polyester FR - Trevira CS
Martindale: 70.000 cycles \pm 20%
Reaction to fire: EN 1021 Part 1-2 (EU)
M1 (FR), BS 5852 CRIB 5 (GB), Classe 1 (IT),
B1 DIN 4102 (D), TB 117:2013 (USA)

Tessuto

100% poliestere FR - Trevira CS
Martindale: 70.000 cicli \pm 20%
Reazione al fuoco: EN 1021 Parte 1-2 (EU)
M1 (FR), BS 5852 CRIB 5 (GB), Classe 1 (IT),
B1 DIN 4102 (D), TB 117:2013 (USA)



C01/057



C01/058



C01/060



C01/061



C01/063



C01/056



C01/059



C01/049



C01/048



C01/050



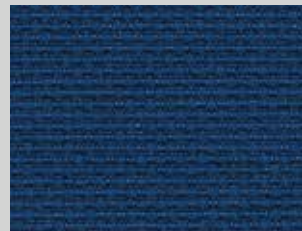
C01/051



C01/052



C01/053



C01/054



C01/055



C01/062



C01/064
BLACK/NERO

B03

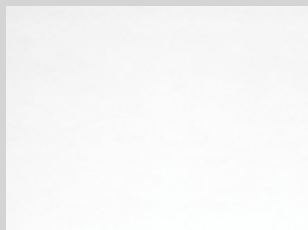


Simil leather

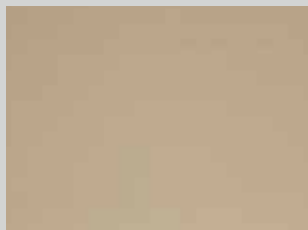
76% PVC - 2% polyurethane - 22% polyester
Martindale: 75.000 cycles
Reaction to fire: EN 1021-2:2006 (EU),
BS 5852-1:1979 part I (GB), Classe 1 IM (IT),
TB 117:2013 (USA)

Similpelle

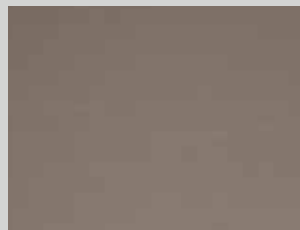
76% PVC - 2% poliuretano - 22% poliestere
Martindale: 75.000 cicli
Reazione al fuoco: EN 1021-2:2006 (EU),
BS 5852-1:1979 part I (GB), Classe 1 IM (IT),
TB 117:2013 (USA)



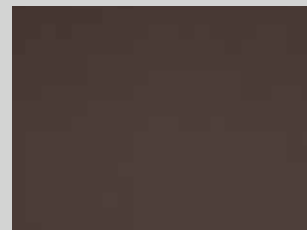
B03/141



B03/181



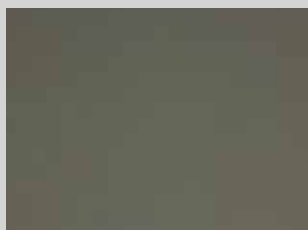
B03/185



B03/183



B03/175



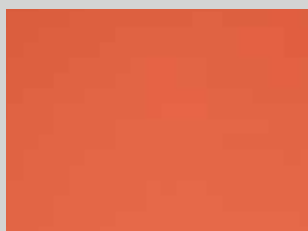
B03/177



B03/187



B03/169



B03/176



B03/179



B03/186



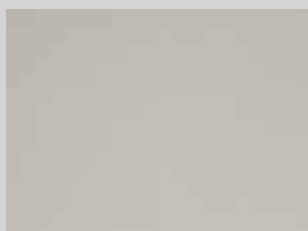
B03/182



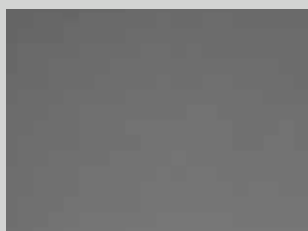
B03/178



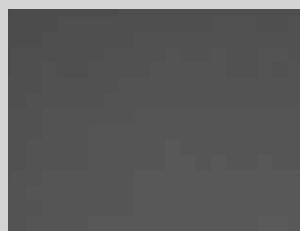
B03/180



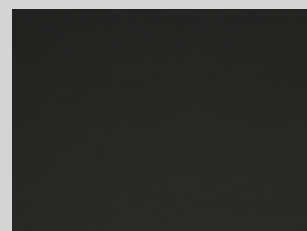
B03/170



B03/137



B03/184



B03/138
BLACK/NERO

C05

Gabriel

Fabric
100% polyester FR - Trevira CS
Martindale: 100.000 cycles
Reaction to fire: EN 1021 Part 1-2 (EU)
M1 (FR), BS 5852 CRIB 5 (GB), Classe 1 (IT),
B1 DIN 4102 (D), TB 117:2013 (USA)

Tessuto
100% poliestere FR - Trevira CS
Martindale: 100.000 cicli
Reazione al fuoco: EN 1021 Parte 1-2 (EU)
M1 (FR), BS 5852 CRIB 5 (GB), Classe 1 (IT),
B1 DIN 4102 (D), TB 117:2013 (USA)

OEKO-TEX®
STANDARD 100



C05/280



C05/285



C05/281



C05/287



C05/282



C05/284



C05/286



C05/295



C05/289



C05/288



C05/290



C05/291



C05/292



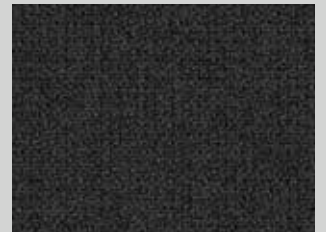
C05/294



C05/293



C05/279



C05/283

Slight differences between colour batches have to be considered normal/ Leggere differenze di colore tra un lotto e l'altro sono da considerarsi normali

D02



Fabric

100% polyester FR - Trevira CS

Martindale: 100.000 cycles \pm 20%

Reaction to fire: EN 1021 Part 1-2 (EU)

M1 (FR), BS 5852 CRIB 5 (GB), Classe 1 (IT),
B1 DIN 4102 (D), TB 117:2013 (USA)

Tessuto

100% poliestere FR - Trevira CS

Martindale: 100.000 cicli \pm 20%

Reazione al fuoco: EN 1021 Parte 1-2 (EU)

M1 (FR), BS 5852 CRIB 5 (GB), Classe 1 (IT),
B1 DIN 4102 (D), TB 117:2013 (USA)

OEKO-TEX®
STANDARD 100



D02/268



D02/271



D02/276



D02/267



D02/269



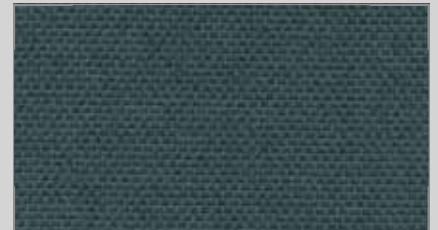
D02/277



D02/272



D02/274



D02/278



D02/270



D02/273



D02/275

W01

abitex

Fabric

70% wool - 30% polyester
Martindale: 100.000 cycles
Reaction to fire: EN 1021 Part 1-2 (EU),
BS 5852 ISO IS1 (GB), TB 117:2013 (USA)

Tessuto

70% lana - 30% poliestere
Martindale: 100.000 cicli
Reazione al fuoco: EN 1021 Part 1-2 (EU),
BS 5852 ISO IS1 (GB), TB 117:2013 (USA)



W01/206



W01/214



W01/205



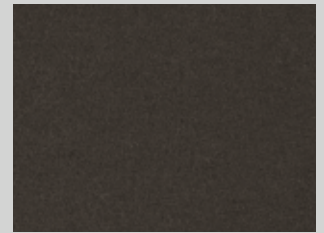
W01/204



W01/226



W01/210



W01/209



W01/216



W01/208



W01/207



W01/215



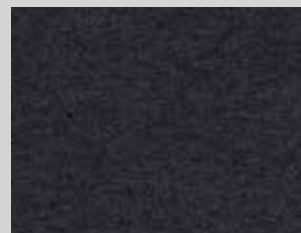
W01/211



W01/213



W01/171



W01/212

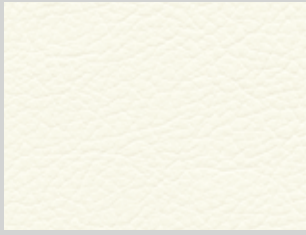
P01

Leather

Animal origin: raw hides
Chrome tanning, aniline dyeing, water pigments finishing.
Markings such as scars and wrinkles are genuine proof of the natural origin of our leather

Pelle

Origine animale: bovina
Concia ai sali di cromo, tintura all'anilina, finitura ai pigmenti all'acqua. Imperfezioni come cicatrici o rughe testimoniano l'autenticità del materiale e le sue origini naturali.



P01/093



P01/098



P01/296



P01/096



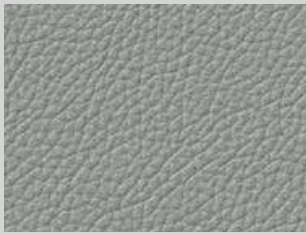
P01/097



P01/257



P01/095



P01/145



P01/172



P01/092
BLACK/NERO

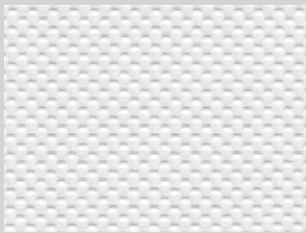
R07

Mesh

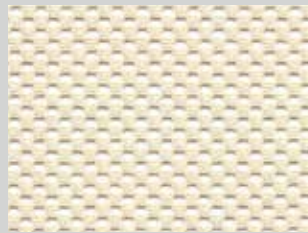
100% polyester

Rete

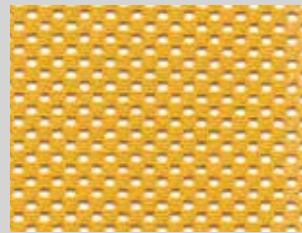
100% poliester



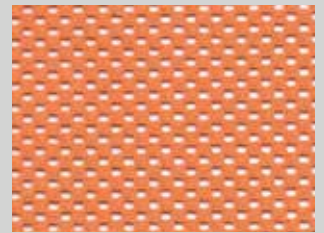
R07/253



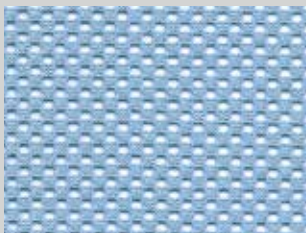
R07/246



R07/249



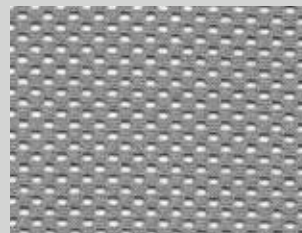
R07/248



R07/252



R07/247



R07/251

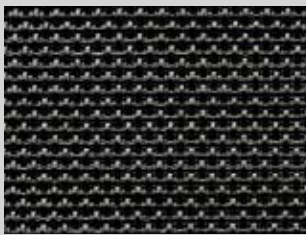


R07/250

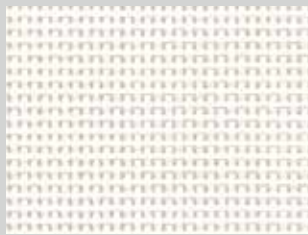
R02

Mesh
70% polyvinyl
30% polyester

Rete
70% polivinile
30% poliester



R02/101

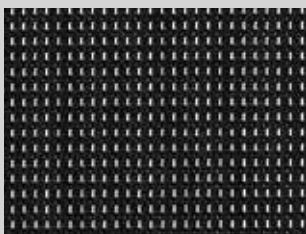


R02/102

R06

Mesh
100% polyester

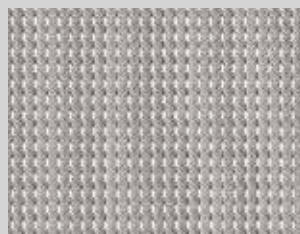
Rete
100% poliester



R06/229



R06/230



R06/231

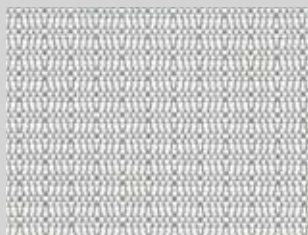
R05

Mesh
30% polyester
70% elastomerized nylon

Rete
30% poliester
70% nylon elastomerizzato



R05/153



R05/148



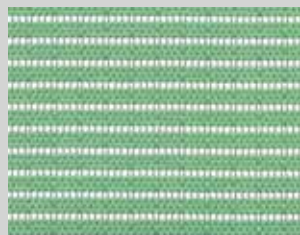
R05/150



R05/151



R05/152



R05/149

